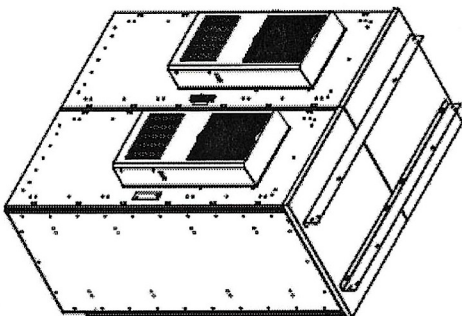
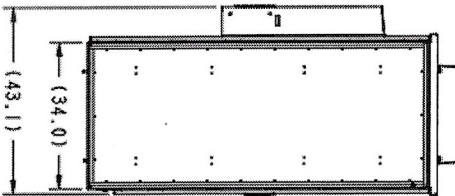
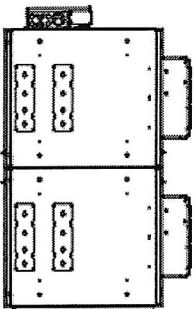
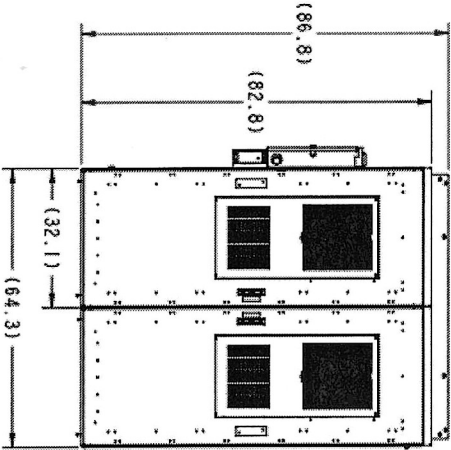
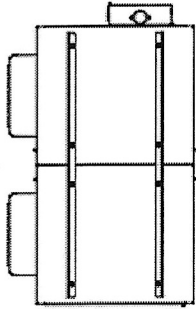


NOTES:  
1. SEE SPECIFICATION 06-006046-1 SPEC METAL FINISH GOOD ASSY



REV	CHANGE NUMBER	DATE	APPD
A	C33280	13-DEC-22	SJR

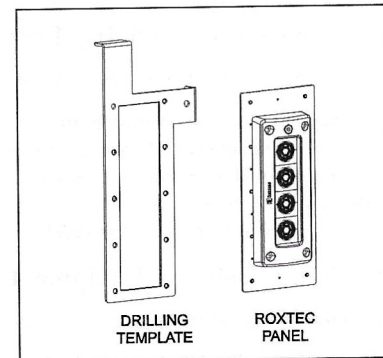
<p>NOTES: AS APPLICABLE UNLESS OTHERWISE SPECIFIED, DIMENSIONS SHOWN IN PARENT DIMENSIONS IN INCHES</p>		<p>TITLE: 2 BAY, EQ 6KAC, EQ 4KAC, 16P LC</p>	
<p>TOOLERANCES: UNLESS OTHERWISE SPECIFIED 3 DECIMAL .XXX ± .005 2 DECIMAL .XX ± .010 1 DECIMAL .X ± .010 FRACTIONS</p>		<p>DATE: 13-DEC-22 DRAWN BY: SJR CHECKED BY: A</p>	
<p>SEE COLOR-CODED BOX</p>		<p>MC-32E6E6K1</p>	

# Charles Roxtec Cable Entry Port Kit

## 97-EZENTRYKTHC4

### General Description and Installation

1. GENERAL INTRODUCTION .....	1
1.1. Document Purpose .....	1
1.2. Product Purpose .....	1
2. INSTALLATION .....	2
2.1. Inspecting the Product .....	2
2.2. Following and Using Safety Precautions .....	2
2.3. Obtaining Tools and Equipment .....	2
2.4. Mounting the CUBE .....	2
3. TECHNICAL ASSISTANCE AND REPAIR SERVICE .....	4
4. WARRANTY & CUSTOMER SERVICE .....	4



**Figure 1 Kit Components**

## 1. GENERAL INTRODUCTION

### 1.1. Document Purpose

This document provides general information for the 97-EZENTRYKTHC4 Roxtec Cable Entry Port Kit. Figure 1 shows the kit components.

**-NOTE-**

Hereafter, the Charles Universal Broadband Enclosure CUBE-PM42422HC3 and PM42422HC4 will be referred to as the "CUBE." The 97-EZENTRYKTHC4 cable entry kit will be referred to as the "kit."

### 1.2. Product Purpose

The kit includes a Roxtec cable entry port and is intended for installation on a CUBE.

#### 2.4.2. Using the Drilling Template

1. Place the drilling template on the left side of the CUBE. Secure in place using the hex screw and washer that ship with the kit. This ensures that the drilling template is correctly positioned (Figure 2).
2. Use a marking utensil to mark the locations of the mounting holes and to trace the inside of the rectangle in the center of the template (Figure 3).
3. Remove the drilling template. Store or discard per company practice.

#### 2.4.3. Installing the Panel

1. Use a 5/16" bit to drill out the mounting holes.
2. Drill a 1/2" hole somewhere inside the rectangle or remove one of the knockouts in the rectangle to allow a saw to enter. Use a saw to cut the rectangle and remove this section of the CUBE wall.
3. Place the Roxtec panel against the CUBE so that the studs on the rear of the panel are aligned with the mounting holes in the CUBE. Secure in place from the inside of the CUBE using the Keps nuts that ship with the kit (Figure 4).

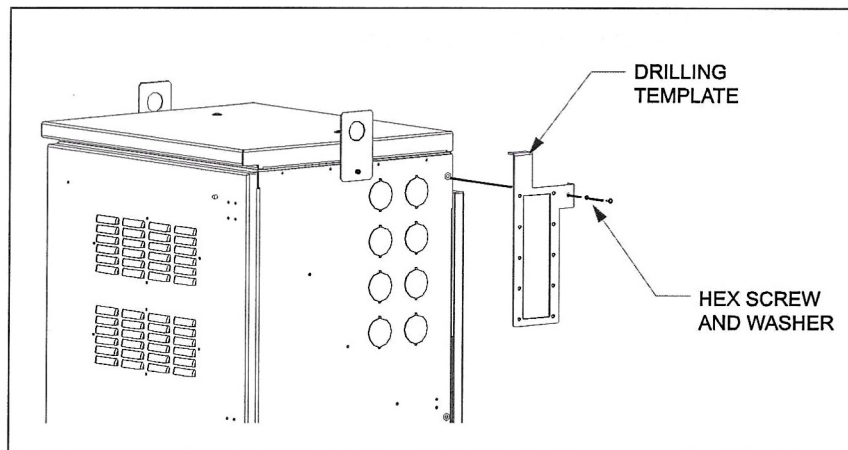


Figure 2 Set Drilling Template

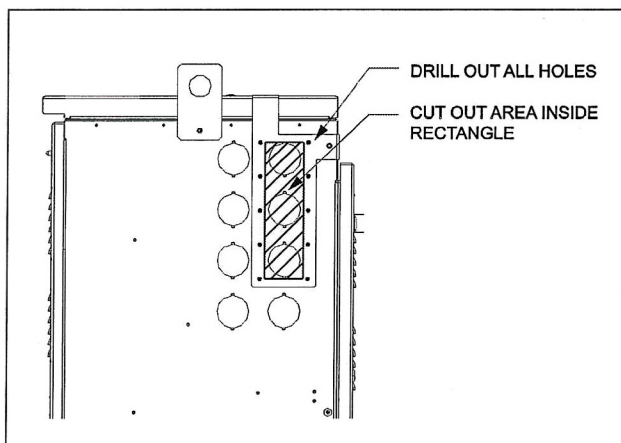


Figure 3 Mark Locations

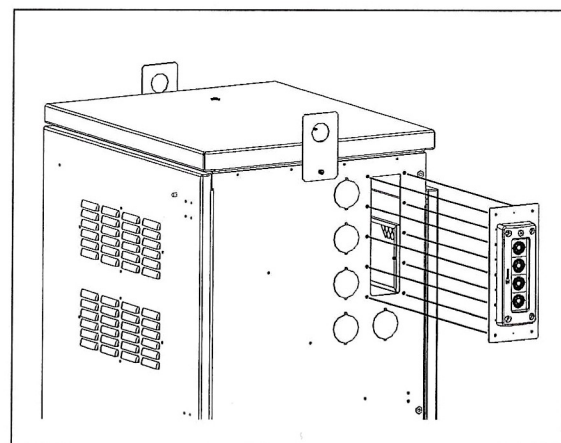


Figure 4 Install Roxtec Panel